

# Tool Talk

Rex Swain  
Independent Consultant  
8 South Street  
Washington, CT 06793  
Tel 860-868-0131  
rex@rexswain.com

Eighth Annual APL2000 User Conference

November 2003

To install:

```
]ufile [1.5] ucmdsrex
```

Required:

```
)EVLEVEL 2
```

Help:

```
]foo ?
```

If you have version 6.5 of the Araxis Merge product, you will need to change the JDIFF command slightly. (In version 6.5 Araxis changed the name of their application from "Merge2000" to "Merge65".) Here's how to fix the user command function:

```
]uload CMDDIFF /r /f=ucmdsrex  
  
)edit CMDDIFF
```

Change...

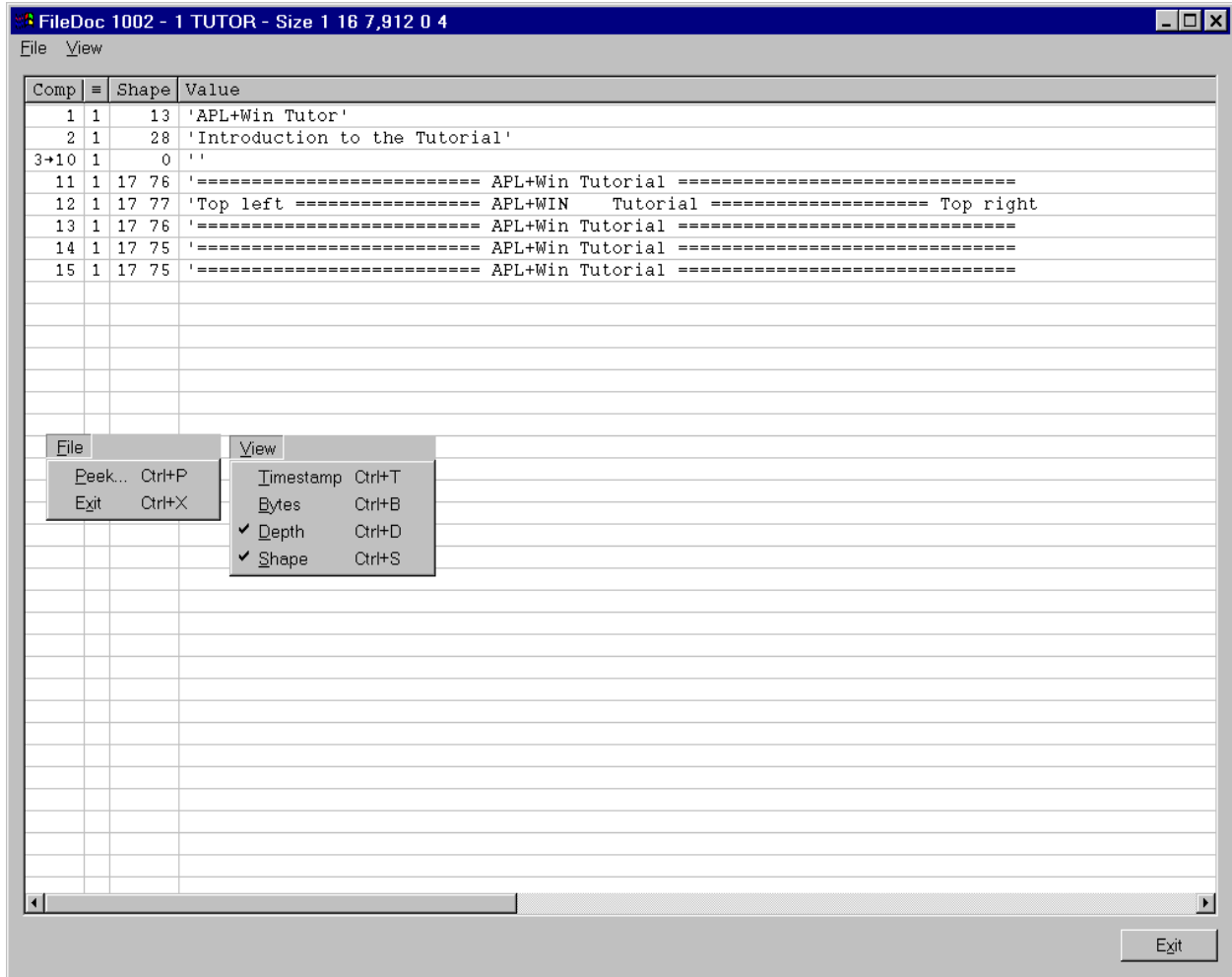
```
[340] □wself←'DIFF_AM' □wi 'Create' 'ActiveObject Merge2000.Application'
```

To...

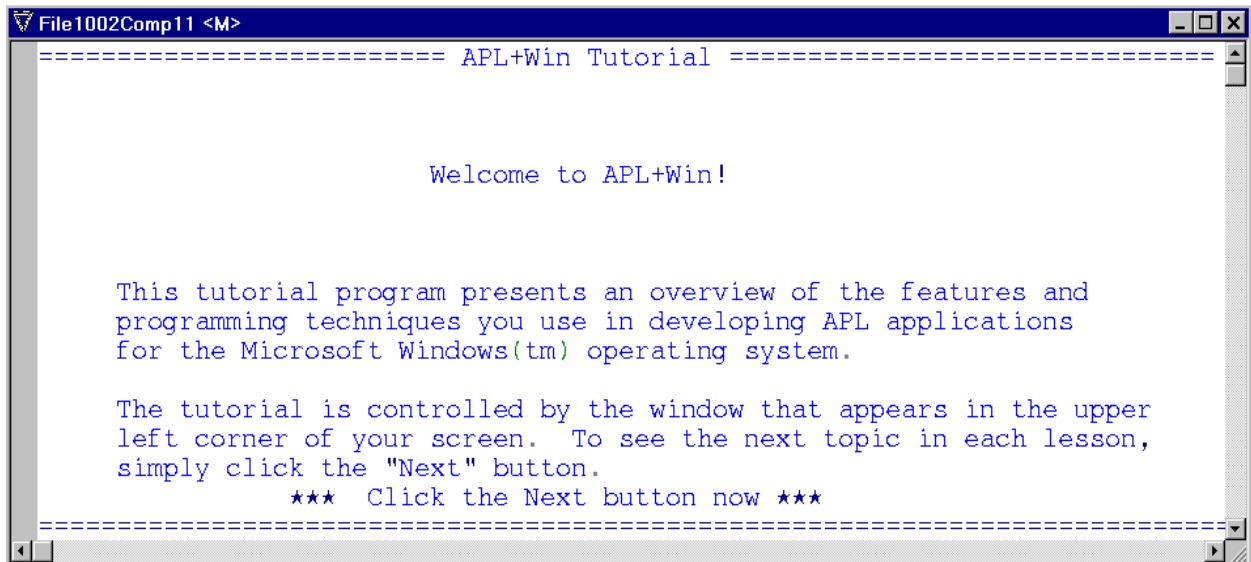
```
[340] □wself←'DIFF_AM' □wi 'Create' 'ActiveObject Merge65.Application'
```

```
]usave CMDDIFF /r /f=ucmdsrex
```

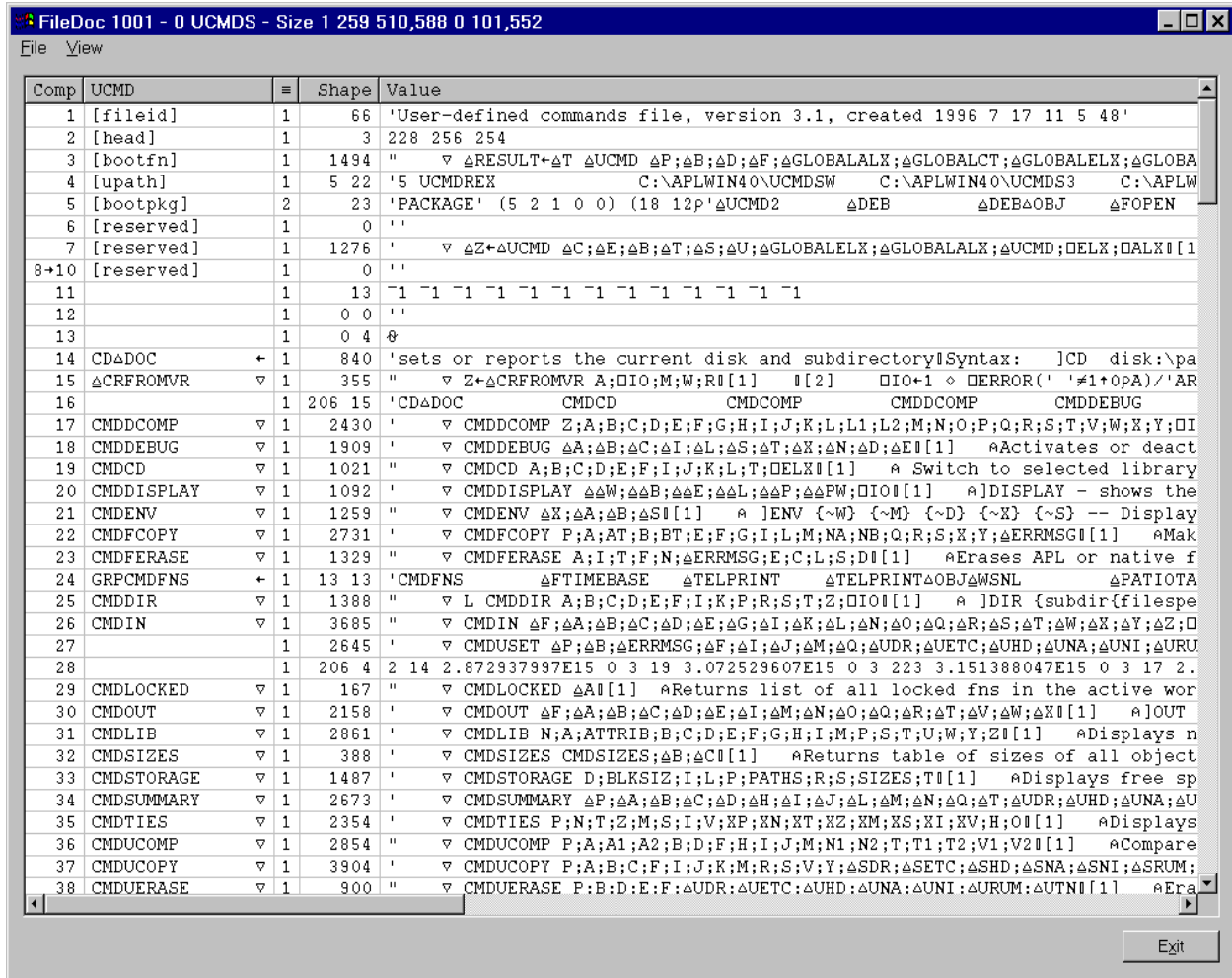
lfiledoc 1 tutor



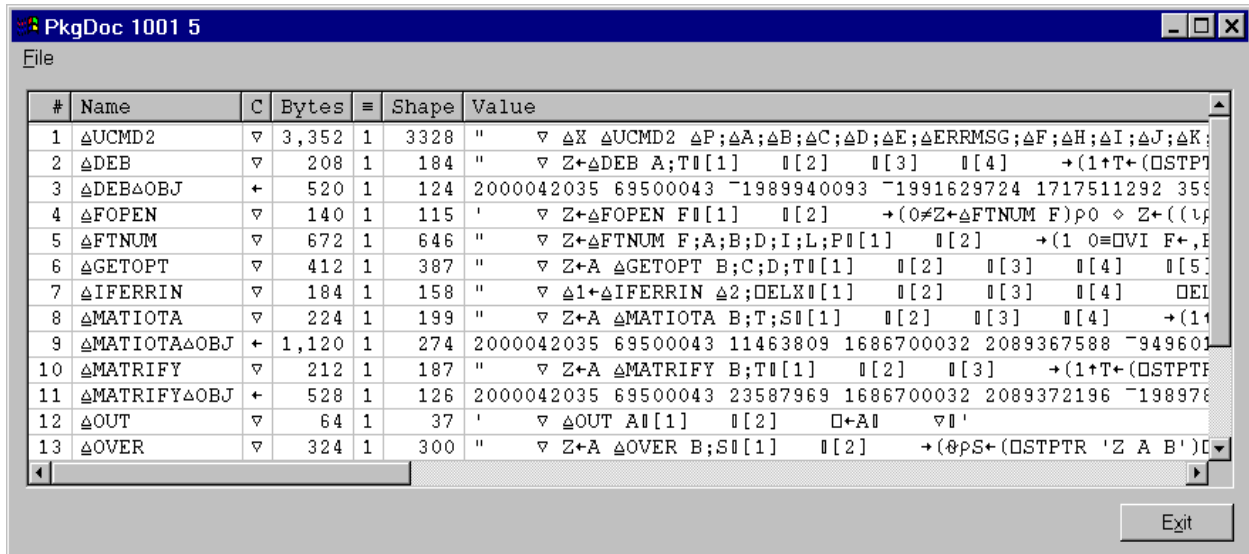
A Double-click component 11



lfiledoc 0 ucmds



A Double-click component 5



## ]wsloc ΔRemember

```

Ini[18]      :if ΔRemember      A only if option turned on
register[0]   register;ΔRemember;c;q;s
register[3]   ΔRemember←1      A make sure we remember these Ini settings
tkh[616]     A ΔRemember used by ∇Ini
tkh[617]     q←~ΔRemember
tkh[618]     ΔRemember←1      A make sure we remember this one last value
tkh[621]     ΔRemember←q
tkh[625]     q←ΔRemember
tkh[626]     ΔRemember←1      A make sure Ini works
tkh[630]     ΔRemember←q
unregister[0] unregister;s;q;a;ΔRemember
unregister[23] ΔRemember←1

```

## ]notlocal ΔRemember

Searching 320 functions ...

```

==> Ini (1)
Ini[18]      :if ΔRemember      A only if option turned on
==> tkh (6)
tkh[617]     q←~ΔRemember
tkh[618]     ΔRemember←1      A make sure we remember this one last value
tkh[621]     ΔRemember←q
tkh[625]     q←ΔRemember
tkh[626]     ΔRemember←1      A make sure Ini works
tkh[630]     ΔRemember←q

```

## ]notlocal □io

Searching 320 functions ...

```

==> AlwaysOnTop (1)
AlwaysOnTop[5] b←(□io+b)▷'hwnd_notopmost' 'hwnd_topmost'
==> AutoResize (4)
AutoResize[15]      w[;□io]←w[;□io]×(↑pw)ρs
AutoResize[37]      w[;□io]←w[;□io]×(↑pw)ρs
==> FFAW (3)
FFAW[87]    P←' ,'[□IO+P]      A Else space before A 07 Jul 2002
FFAW[110]   F←F-D×□IO          A Adjust first for display origin
FFAW[121]   →(□IO+2↑''''∈A)▷L90,L91,L92,L93
==> GetWinVer (2)
GetWinVer[17]      struc[3+□IO]←65536↑struc[3+□IO]
==> goo (1)
goo[2]    □io←1 ◇ foo

```

## ]notlocal □io←

Searching 320 functions ...

```

==> goo (1)
goo[2]    □io←1 ◇ foo

```

## ]notlocal Δbdat←

Searching 320 functions ...

```

==> sell (1)
sell[63]    (Δba Δsa Δbdat Δsdat)←(ba sa bdat sdat) A save copies

```

```
lvarss prox  
ΔProxyHost ΔProxyPass ΔProxyPort ΔProxyUse ΔProxyUser
```

```
lvarss dir;path  
AAmixdir ΔAAmixdir ΔExeDir ΔPath ΔSysDir ΔWinDir
```

```
lfnss help  
HtmlHelp help help1 help2 helpg helpw  
lfnss Help /c  
HtmlHelp
```

```
lfnss num  
EditNum EditNumFmt EditNumVifi FMTNUM GETNUMFMT  
lfnss num ;  
EditNum FMTNUM
```

```
lvarfind 'Fixed'
```

```
Searching 880 variables for 'Fixed'
((c1 1)AAmixdir) ← '100% Fixed Income'
griddoc <162> ← 'xFixedCols property:'
griddoc <163> ← " Value@Long ← DWI 'xFixedCols'"
griddoc <164> ← " DWI 'xFixedCols' Value@Long"
griddoc <169> ← 'xFixedRows property:'
griddoc <170> ← " Value@Long ← DWI 'xFixedRows'"
griddoc <171> ← " DWI 'xFixedRows' Value@Long"
```

```
lvarfind 10
```

```
Searching 880 variables for 10
AAptiles ← 0 5 10 15 20 25 30 35 40 45 50 55 60 65 70 75 80 85 90 95 100
BBS_RAISED ← 10
BORDER_RAISED ← 10
CHART_Y2LEGFT ← 10
CPI_3DINFO ← 10
CSA_XGAP ← 10
HIT_RIGHTTITLE ← 10
MK_CUBE ← 10
RIFdata[1;] ← 10 1.5
SURFACE ← 10
(14 2 (13 4) 1>VARG0) ← ,10
(15 2 (13 4) 1>VARG2) ← ,10
(63 2 (13 4) 1>VARG2) ← ,10
```

```
lvarfind 1 2
```

```
Searching 880 variables for 1 2
AAmixes ← 1 2 3
EFororder[2;] ← 1 2 'Market Drop'
PPorder[2;] ← 1 2 'Medium Growth'
```

DOMAIN ERROR

```
TextSizePix[4] z←1▷□wi 'Draw' ('Scale' 5-1) ('?Text' t)
                ^
```

```
)si
```

```
TextSizePix[4] ★
```

```
chart3a[219]
```

```
sel3[329]
```

```
⊕
```

```
sel0[102]
```

```
>[fmTK.fMain.sMain.pgHome.fWork.wb;XBeforeNavigate2]
```

```
]si
```

```
TextSizePix[4] ★ z←1▷□wi 'Draw' ('Scale' 5-1) ('?Text' t)
```

```
chart3a[219] (h w)←p TextSizePix (i▷x1) A p is the chart's parent frame
```

```
sel3[329] chart3a 0 A 0=make new chart from scratch
```

```
⊕
```

```
sel0[102] ⊕x
```

```
>[fmTK.fMain.sMain.pgHome.fWork.wb;XBeforeNavigate2]
```

lsymfind clip

The screenshot shows the SymFind clip application window. The main window title is "SymFind clip" and it has a menu bar with "File", "Edit", "View", and "Actions". The main area is a table with columns: Lib, WSID, UFile, C, Name, Shape, and Value. The table lists 96 matching names across 21 workspaces and 2 files. Several context menus are open over the table:

- File menu:** Exit (Ctrl+X)
- Edit menu:** Select All (Ctrl+A), Select None (Ctrl+N), Invert Selection (Ctrl+I)
- View menu:**
  - WSID (checked, Ctrl+W)
  - UFile (checked, Ctrl+U)
  - Timestamp (Ctrl+T)
  - Bytes (Ctrl+B)
  - Depth (checked, Ctrl+E)
  - Shape (checked, Ctrl+S)
  - Value (checked, Ctrl+L)
- Actions menu:**
  - Peek (Ctrl+P)
  - Get Info (Ctrl+G)
  - Get Info for All (Alt+G)
  - Diff (Ctrl+D)
  - Remove from list (Del)
  - Functions only (Ctrl+F)
  - Variables only (Ctrl+V)

At the bottom of the window, there are two buttons: "Get All Info" and "Exit".

Lib	WSID	UFile	C	Name	Shape	Value
5	PS2		▽	ClipGet2		
5	PS2		▽	ClipGet3		
5	PS2		▽	ClipGetFmt		
5	PSSERVER		▽	CLIPIT		
5	PSServer.old		▽	CLIPIT		
5	PSServer.old		▽	IFCLIPITYPE		
5	PSServer.old		▽	wSETCLIP		
5	PSServer.old		▽	wGETCLIP		
5	UCMDREX		▽	CMDCLIPDOC		
5	UCMDREX		+	GRPCMDCLIPDOC		
5	UCMDREX		+	CLIPDOCΔDOC		
9	EleClipboard		▽	TClipBoard		
22	Source		+	AS_NOTCLIPPED		
22	Source		+	CL_NOTCLIPPED		
22	Source		+	CFX_ID_EXPORTCLIPBOARD		
22	Source		▽	ClipCopy		
22	Source		▽	ClipGet		
22	Source		▽	ClipGet2		
22	Source		▽	ClipGet3		
22	Source		▽	ClipGetFmt		
219	PROVAL		▽	CLIPIT		
219	PROVAL		▽	IFCLIPITYPE		
219	PROVAL		▽	wSETCLIP		
219	PROVAL		▽	wGETCLIP		
5		UCMDREX	+	CLIPDOCΔDOC		
5		UCMDREX	▽	CMDCLIPDOC		
5		UCMDREX	+	GRPCMDCLIPDOC		
C:\APLWIN40		UCMDSW	+	CLIPCOPYΔDOC		
C:\APLWIN40		UCMDSW	▽	CLIPFmt		
C:\APLWIN40		UCMDSW	+	CLIPPASTEΔDOC		
C:\APLWIN40		UCMDSW	▽	CLIPUnfmt		
C:\APLWIN40		UCMDSW	▽	CMDCLIPCOPY		
C:\APLWIN40		UCMDSW	▽	CMDCLIPPASTE		
C:\APLWIN40		UCMDSW	+	GRPCMDCLIPCOPY		
C:\APLWIN40		UCMDSW	+	GRPCMDCLIPPASTE		

Found 96 matching names in 21 of 137 workspaces  
 Found 11 matching names in 2 of 5 files

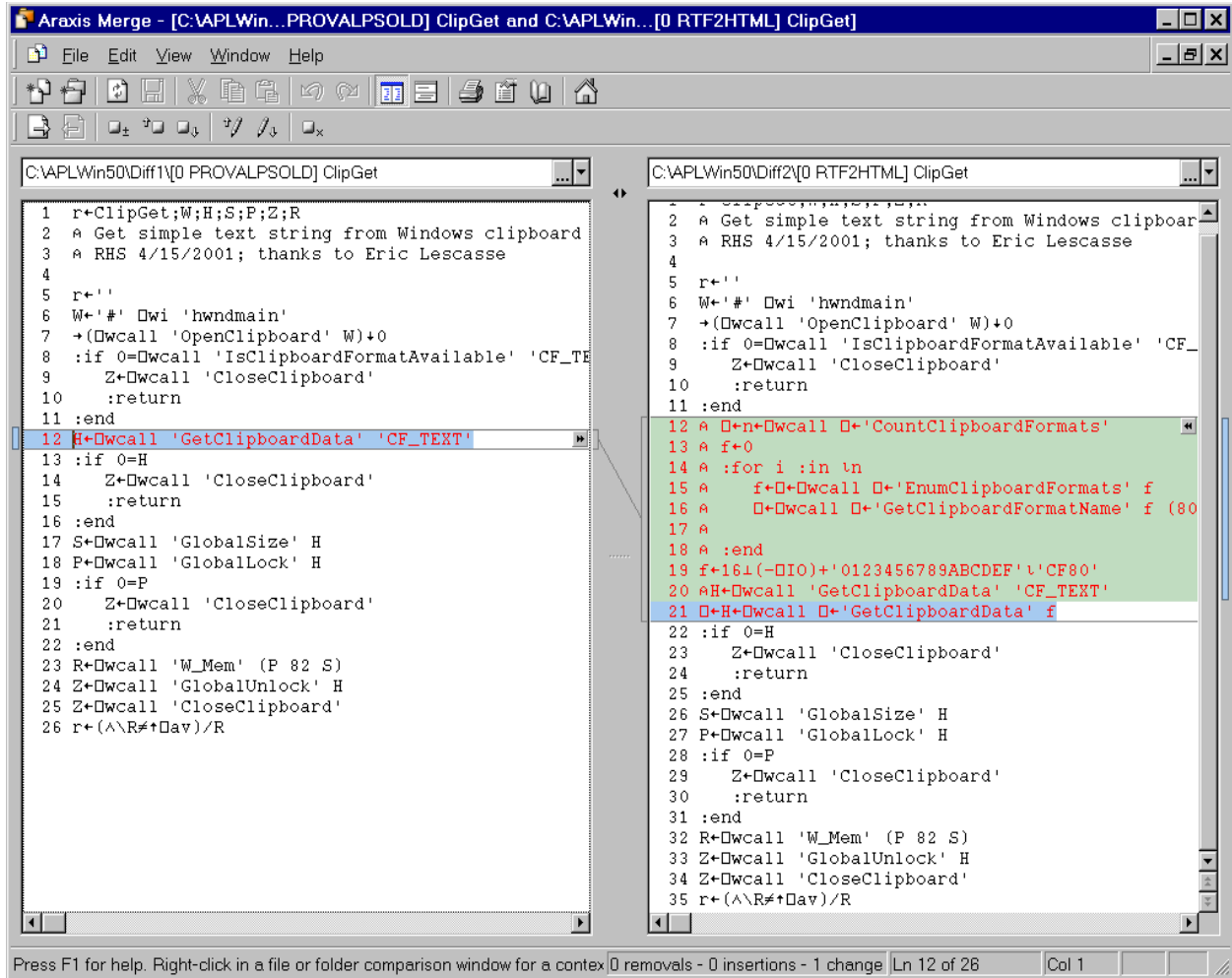
SymFind clip

File Edit View Actions

Lib	WSID	UFile	C	Name	Shape	Value
5		UCMDREX	▽	CMDCLIPDOC	- 2633	▽ CMDCLIPDOC X;A;C;F;H;I;K;M
C:\APLWIN40		UCMDSW	▽	CMDCLIPPASTE	- 1160	▽ CMDCLIPPASTE Q;A;R;hClipMe
0	PICUTIL		▽	CaptureToClip	- 1067	▽ CaptureToClip formname [1]
2	picutil		▽	CaptureToClip	- 1067	▽ CaptureToClip formname [1]
4	hotkey		▽	Clip		
0	PROVALPS		▽	ClipCopy	- 1114	▽ ClipCopy x;H;L;Z;W [1] A
0	PROVALPSOLD		▽	ClipCopy	- 1114	▽ ClipCopy x;H;L;Z;W [1] A
0	REXPLAY		▽	ClipCopy	- 1120	▽ ClipCopy D;F;hGlobalMemory
0	RTF2HTML		▽	ClipCopy	- 1114	▽ ClipCopy x;H;L;Z;W [1] A
5	DEMO		▽	ClipCopy	- 1114	▽ ClipCopy x;H;L;Z;W [1] A
5	PROVALPS		▽	ClipCopy	- 1114	▽ ClipCopy x;H;L;Z;W [1] A
5	PS2		▽	ClipCopy	- 1114	▽ ClipCopy x;H;L;Z;W [1] A
22	Source		▽	ClipCopy	- 1114	▽ ClipCopy x;H;L;Z;W [1] A
1	REL40		▽	ClipFmt	- 803	▽ R+ClipFmt D;dr;L [1] A F
3	WINDOWS		▽	ClipFmt	- 780	▽ Z+ClipFmt R;A;DIO [1] DI
3	WINDOWS		+	ClipFmtΔDOC	1 3518	DOCUMENTATION OF
0	PROVALPS		▽	ClipGet	- 1189	▽ r+ClipGet;W;H;S;P;Z;R [1]
0	PROVALPSOLD		▽	ClipGet	- 1189	▽ r+ClipGet;W;H;S;P;Z;R [1]
0	RTF2HTML		▽	ClipGet	- 1541	▽ r+ClipGet;W;H;S;P;Z;R [1]
5	DEMO		▽	ClipGet	- 1189	▽ r+ClipGet;W;H;S;P;Z;R [1]
5	PROVALPS		▽	ClipGet	- 1189	▽ r+ClipGet;W;H;S;P;Z;R [1]
5	PS2		▽	ClipGet	- 1189	▽ r+ClipGet;W;H;S;P;Z;R [1]
22	Source		▽	ClipGet	- 1189	▽ r+ClipGet;W;H;S;P;Z;R [1]
0	PROVALPS		▽	ClipGet2	- 2013	▽ r+ClipGet2;W;H;S;P;Z;R;F;a
0	PROVALPSOLD		▽	ClipGet2	- 2013	▽ r+ClipGet2;W;H;S;P;Z;R;F;a
5	DEMO		▽	ClipGet2	- 2013	▽ r+ClipGet2;W;H;S;P;Z;R;F;a
5	PROVALPS		▽	ClipGet2	- 2013	▽ r+ClipGet2;W;H;S;P;Z;R;F;a
5	PS2		▽	ClipGet2	- 2013	▽ r+ClipGet2;W;H;S;P;Z;R;F;a
22	Source		▽	ClipGet2	- 2013	▽ r+ClipGet2;W;H;S;P;Z;R;F;a
0	PROVALPS		▽	ClipGet3	- 1223	▽ r+ClipGet3;W;H;S;P;Z;R;F [
0	PROVALPSOLD		▽	ClipGet3	- 1223	▽ r+ClipGet3;W;H;S;P;Z;R;F [
5	DEMO		▽	ClipGet3	- 1223	▽ r+ClipGet3;W;H;S;P;Z;R;F [
5	PROVALPS		▽	ClipGet3	- 1223	▽ r+ClipGet3;W;H;S;P;Z;R;F [
5	PS2		▽	ClipGet3	- 1223	▽ r+ClipGet3;W;H;S;P;Z;R;F [
22	Source		▽	ClipGet3	- 1223	▽ r+ClipGet3;W;H;S;P;Z;R;F [

Found 96 matching names in 21 of 137 workspaces  
Found 11 matching names in 2 of 5 files

Get All Info Exit



]diff ?

Compare (show the DIFFerences between) two functions or variables

Syntax: ]DIFF OBJECT1 ; OBJECT2

Where each object may be:

Active ws:

FOO A object name (function or variable)

Saved ws:

UTILS FOO A wsid, object name

9 STUFF FOO A library number, wsid, object name

\EUDORA\ATTACH\UTIL FOO A path, wsid, object name

User command file:

FOO /F=UCMDS A object name and ucmd file to get it from

FOO /F=19 UCMDS A object name and ucmd file with lib number

FOO /F A object name, from first ]UFILE file

APL file component:

tn,cn A tie number, component number

tn#cn A tie number, component number

You may use "=" for the second wsid or object name

Example: ]DIFF FOO;UTILS =

Alternate syntax (borrowed from ]COMP) with no semicolon:

]DIFF object1 object2

Each object may be one of the following types:

fname [/F[=cmdfile]] A function

varname [/F[=cmdfile]] A variable

tn,cn A APL file: tie number, component number

tn#cn A APL file: tie number, component number

Examples:

]DIFF FUN GUN

]DIFF FUN FUN /F=5 UCMDS

]DIFF FUN /F=5 UCMDS GUN

]DIFF FUN /F=5 UCMDS GUN /F=9 MYUCMDS

You may use "=" for the second object name

Note that you may not specify WSIDs when using this no-semicolon syntax

Execute ]DIFF /ERASE occasionally to clean up temp files

(Sorry, this feature does not work with Win98)

You may establish a list of user command files with

]DIFF /ULIST=file1;file2;file3

and query it with

]DIFF /ULIST

Then use

]DIFF FOO;= /U

/U triggers a search through the list of files established above for the first object named FOO

Requires: Araxis Merge 2001, Standard Edition, version 6.0

see <<http://www.araxis.com/merge>>

You must set the APL font manually:

View - Options - Fonts and Colours

Then set all four fonts to something like: APLFONT, Regular, 11

Requires: DEB DLB DTB ANFILE

After similar by JVM and Patrick Parks

06 Apr 2003 Rex Swain, Independent Consultant, [www.rexswain.com](http://www.rexswain.com)